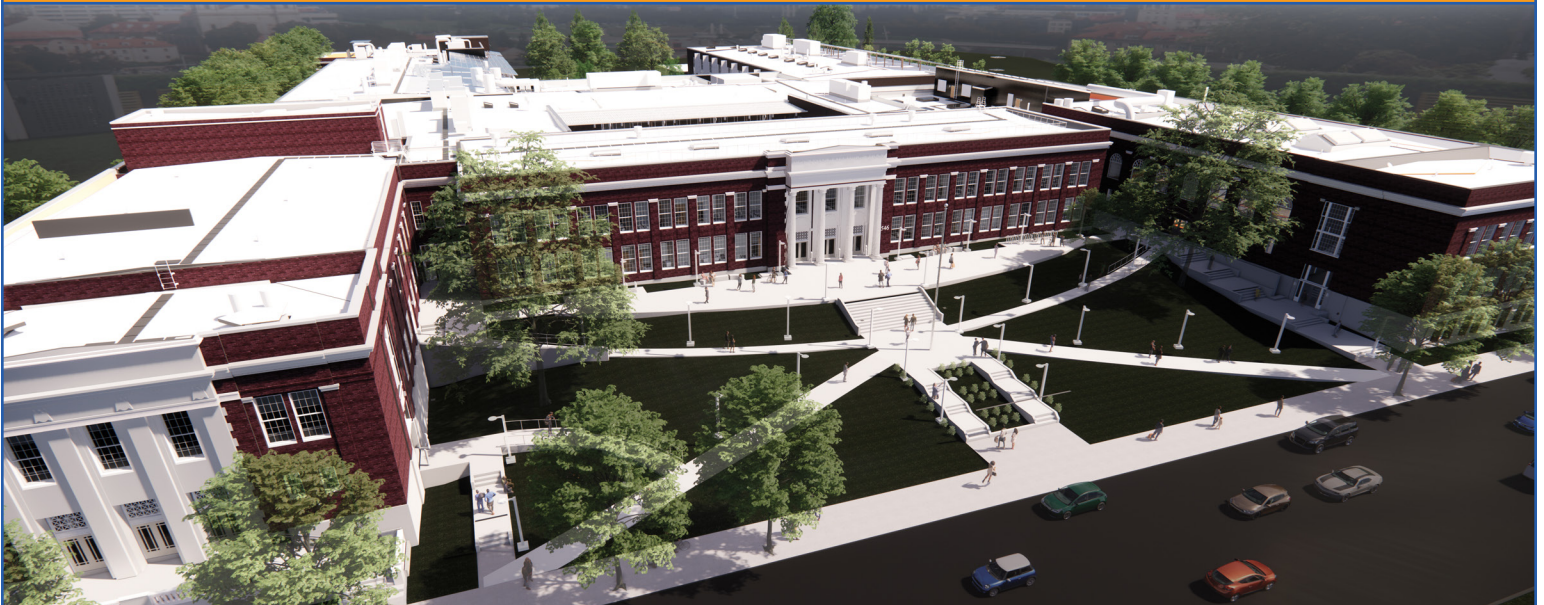




Benson Polytechnic High School

Modernization



Student Commons/Cafeteria

Design Highlights

- Historically significant universally accessible main entry with upgraded security and an enclosed vestibule.
- New, 2-story wings featuring co-located CTE and core academic learning spaces.
- CTE working courtyard featuring covered/ uncovered outdoor classroom & workspace.
- A centrally located student commons/cafeteria connected to an internal courtyard that serves as the heart of the new school.
- Auditorium upgrade maintains historic character while adding the latest lighting and audio-visual technologies.
- New Community room to facilitate interaction with alumni, industry & community partners.
- Student flex areas for collaboration, small group work and social interaction.

Project Timeline

SPRING 2019 - SUMMER 2021

Design & Permitting

Schematic Design / Design Development / Construction Documents / Permitting

FALL 2021 - SUMMER 2024

Construction

Students and staff will temporarily relocate during construction.

FALL 2024

Completion

Fully modernized Benson campus opens



South Courtyard Entry with Solar Panels and Biology Lab Roof Deck.

Benson Modernization Details

Transforming Historic Benson Polytechnic

Construction will begin in the fall of 2021 to fully modernize Benson Polytechnic. The remodel will include a seismic retrofit of the historically significant buildings and complete health & safety upgrades. A few of the design highlights include updated CTE learning spaces and shops, a centrally located student commons/cafeteria connected to an internal courtyard and remodels of the gym & auditorium. The entire campus is designed with sustainability in mind; many elements will be reused, over 40 new trees will be planted and a solar energy array will provide at least 400 kW of renewable energy. This new modernized campus will continue to inspire and engage future generations of diverse Portland students.

Benson Fall 2020 Update

The Bassetti Architects design team has completed Design Development and is now working towards Construction Documents for permitting. They are working closely with our contractor Andersen Construction to complete the design and review bid estimates as they preparing for the start of construction in the fall of 2021. For more information and updates please visit the Benson Modernization website <http://BensonBond.pps.net>

New MPG Building will serve diverse student needs

The new campus will also include a new multi-story building to house the PPS Multiple Pathways to Graduation (MPG) program and will include facilities for Alliance at Benson and Meek, DART/Clinton, Teen Parent Childcare, Reconnection Services & Program. For more detailed information about this project please visit the (MPG) project website at: <https://www.pps.net/Page/14873>

Benson Tech/MPG programs will relocate during construction

In order to increase safety and project efficiency, all students and staff will be temporarily relocated during construction: Benson staff and students will relocate to the Marshall Campus on SE 92nd Ave. Alliance High School, Reconnection and DART/Clinton will relocate to the Kenton Campus. Evening & Summer Scholars have relocated to Grant High School.

Transportation to the Marshall Campus

PPS is currently studying transportation options that will help Benson students get to the Marshall campus during the three-year construction period. The transportation plan could include a mix of public transportation and yellow school bus service. The Marshall campus is getting upgrades to support the unique Benson Polytechnic CTE program.

BUILDING OUR FUTURE TOGETHER.

<http://BensonBond.pps.net> • Email: BHSMoD@pps.net • Phone: 503-916-2222
 f www.facebook.com/pps.homepage/ @PPSConnect

Portland Public Schools
 School Building Improvement Bond

